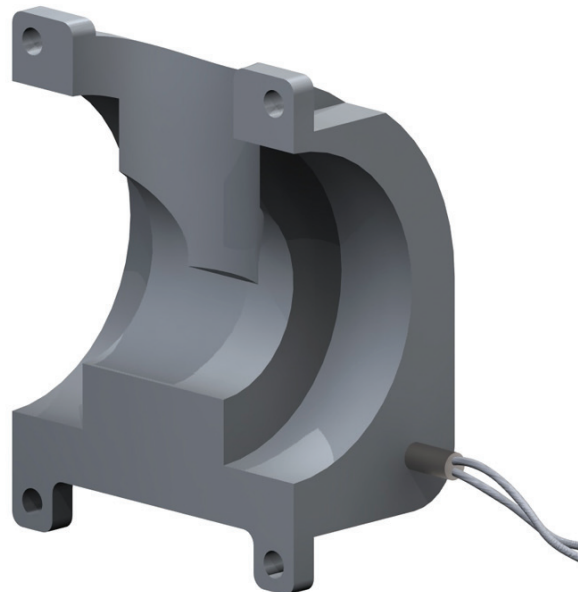


QMax Electric Heating Jackets are Custom made from aluminum and are designed to maintain specific process temperatures on process equipment such as flanges, nozzles, valves, pumps, meters, strainers and more. **QMax EHJs** house a removable electric cartridge heater that conducts heat through the aluminum to create a "heat shield" effect around the component. Use **QMax EHJs** in electric tracing applications instead of wrapping the valve with electric tracing.

EHJ ELECTRIC HEATING JACKET



Advantages of QMax Heat Jackets over wrapping electric tracing around the component:

- Less Installation Time
- Reusable Jacket
- Covers entire component including flanges which are Heat Sinks
- Guaranteed Performance

QMax jackets are specifically designed for your application whether it is a common valve or a one-of-a-kind piece of equipment. In most cases, **QMax** can design the jacket while the component is inline or in the manufacturing facility. Please fill out our **QMax EHJ** Evaluation Questionnaire and send it to your representative for individual application attention.

Notes: